



1770 967 FM | Buda, TX
www.ncfh.org

Midwest Stream Forum Closing Plenary

March 30th, 2022



MARLEY AND ME

- ▶ Bobbi Ryder
- ▶ MWSF 3.30.22
- ▶ Closing Plenary

The Assignment

1. **My “Journey”**
 2. **Inspiration for the Increasing Access to Care Campaign**
 3. **Where Do We Go from Here?**
- 
- Three parallel white lines of varying lengths are positioned in the bottom right corner of the slide, slanted upwards from left to right.



MY COUSIN MARLEY



- Campaign Home
- We Care
- Campaign Toolbox
- Promising Practices
- IAC Trainings
- Sign Up for the Campaign

I CARE ABOUT AMERICA'S AGRICULTURAL WORKERS

The local community of Ag workers may change over time -- mechanization, drought, or new industry may cause a drop in numbers, or more single males may move into a community that used to see more workers traveling in family groups-- but the need for Community and Migrant Health Centers to reduce barriers to care has never been greater.

I think I know why we care,

But why don't more people care?

A decorative graphic consisting of several parallel white lines of varying lengths, slanted diagonally from the bottom right towards the top right, located in the lower right quadrant of the slide.

Fear of the
Unknown

Ignorance
and
Prejudice

Family &
Regional
Biases

Selfishness
& Economics

Environment
&
Experiences

**WHAT ELSE GETS IN THE WAY OF
COMPASSION?**



1. My Personal Journey

Dime de donde vienes.....

A decorative graphic consisting of several parallel white lines of varying lengths, slanted upwards from left to right, located in the bottom right corner of the slide.

**I DON'T KNOW HOW TO ACT MY AGE,
I'VE NEVER BEEN THIS OLD BEFORE**



**Sometimes the light's all shining
on me**

Other times I can barely see

Lately it occurs to me

What a long strange trip its been!



WHAT A LONG STRANGE TRIP IT'S BEEN
-Jerry Garcia & Robert Hurter



TRUE CONFESSIONS TIME



**PLACE OF BIRTH
PARENTAL & FAMILY RELATIONSHIPS
EARLY CHILDHOOD EXPERIENCES
ADULT EDUCATION
ADULT EXPERIENCES**

My Stories

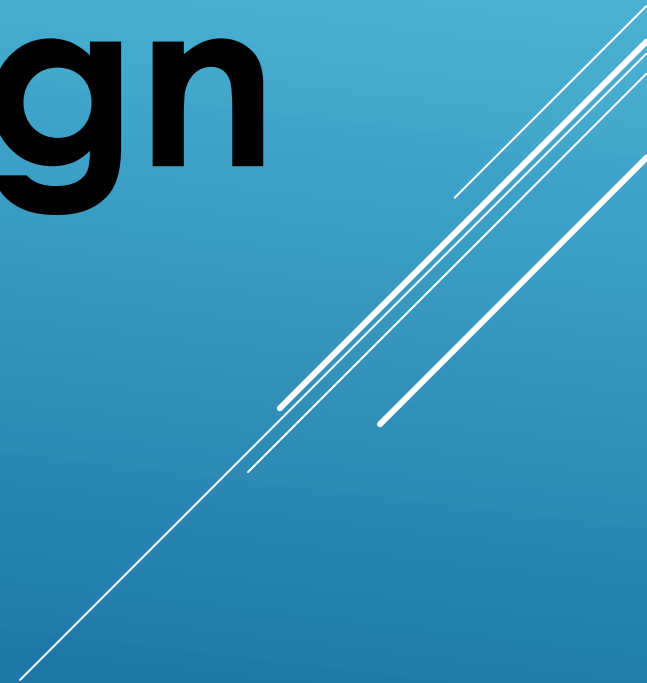
- ▶ **Children must be taught how to think, not what to think**
- ▶ **Nature abhors a vacuum**
- ▶ **Andar con pies de plomo**
- ▶ **Sin pelos en la lengua**
- ▶ **Dar en el clavo**
- ▶ **Dormir en los laurels**
- ▶ **De Buena fe**
- ▶ **Pasar de la raya**

DICHOS (AKA TRUISMS)

- ▶ **Common sense is the collection of prejudices acquired by age 18 – Will Rogers**
- ▶ **We are all born mad. Some remain so. - Samuel Beckett**
- ▶ **Our life is what our thoughts make it – Marcus Aurelius**
- ▶ **Prejudice is a great time saver. You can form opinions without taking time to get the facts. EB White**
- ▶ **We must learn to live together as brothers or perish together as fools MLK**
- ▶ **Poverty is the mother of crime. Marcus Aurelius**

QUOTES

2. The Inspiration for the Campaign



YA ERA TIEMPO!



**3. Where do we go
from here?**

Al futuro!

A decorative graphic consisting of several parallel white lines of varying lengths, slanted upwards from left to right, located in the bottom right corner of the slide.



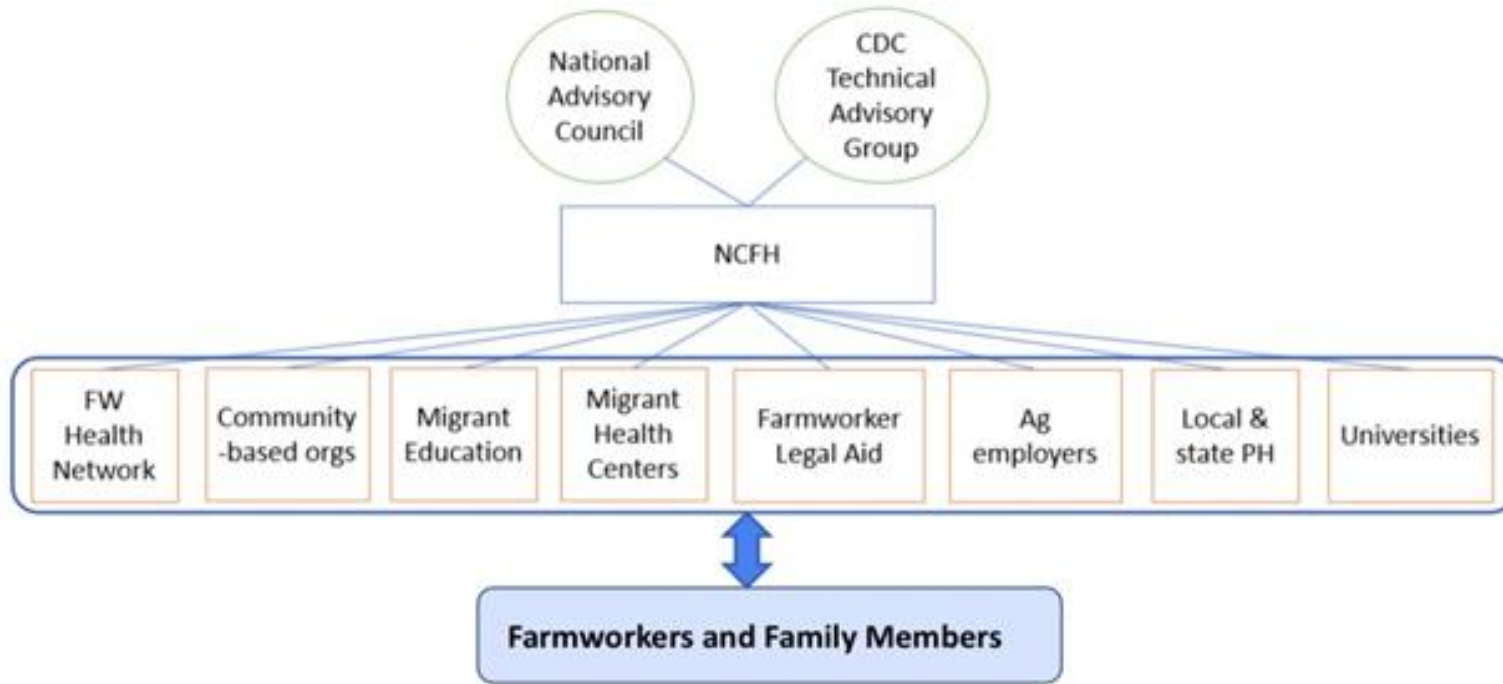
**100 TEAMS ARE BETTER THAN 1
NORTH CAROLINA DEPT. OF HEALTH
& HUMAN SERVICES**



2021-2022 Learning Collaboratives

This year NCFH is excited to offer Community & Migrant Health Center staff the opportunity to participate in eight different Learning Collaboratives (LCs). LCs provide participants with regular training sessions, technical assistance, and time to strategize with and learn from peers around the country. Each LC will consist of a set number of learning sessions and will run from the fall of 2021 through June 2022.

CDC/NCFH national partnership network structure



NCFH-CDC PARTNERSHIP IN
RESPONSE TO COVID 19

JOIN THE AG WORKER ACCESS CAMPAIGN

DO YOU CARE ABOUT AMERICA'S AGRICULTURAL WORKERS

Are your health centers able to identify the Ag Workers that they serve accurately?

Are there Ag Workers in your service area that are not using health center services?



More than 20% of the estimated number of ag workers are being served in migrant and community health.

Our goal is to reach 2 million Ag Workers!

Get involved by joining the Campaign today! Scan the QR Code below.



The saying “Each one teach one” is an African proverb that originated in America during slavery times. Slaves were seen as chattel and therefore denied an education so when one slave learned to read or write, it became his duty to teach someone else.

The meaning of each one teach one

www.eachoneteachone.org.uk/about/

Benjamin Franklin

“Tell me & I forget, teach me & I remember, involve me and I learn”

Three parallel white lines of varying lengths are positioned in the bottom right corner of the slide, slanted upwards from left to right.



MY COUSIN MARLEY



& ME



WHO WILL YOU REACH?

WHO WILL YOU INVOLVE?

**HOW WILL YOU HELP TO FILL THAT
VACUUM?**

**WHO CAN YOU RECRUIT TO HELP WHEN
YOUR APPROACH DOES NOT WORK?**



Ag Worker Access Campaign

A national initiative to increase the number of Migratory & Seasonal Agricultural Workers & their families served in Community and Migrant Health Centers.

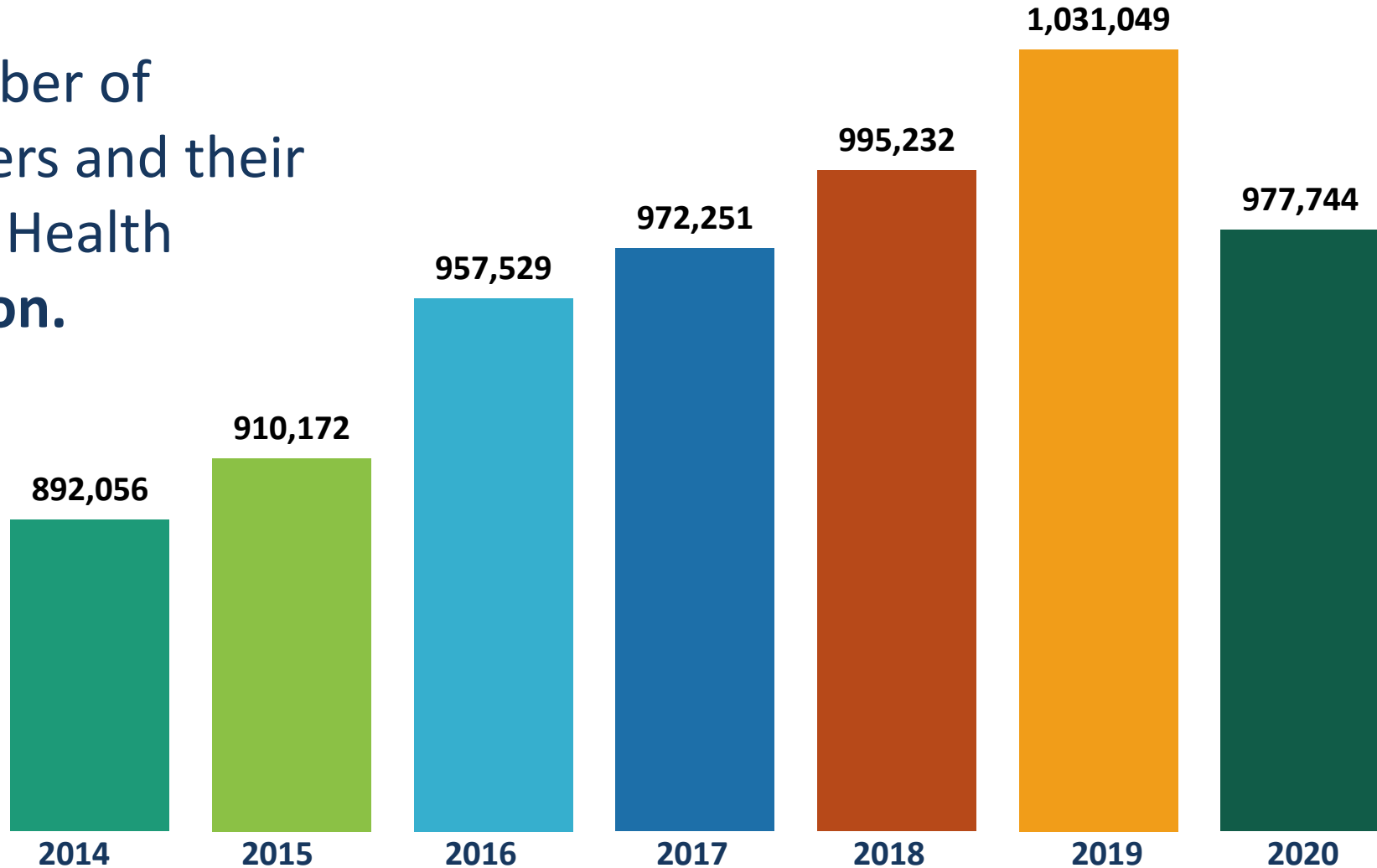
<http://www.ncfh.org/ag-worker-access.html>





Campaign Goal

- ▶ Increase the number of Agricultural workers and their families served in Health Centers to **2 million**.





Campaign Task Force Membership

Task Force is comprised of members representing **24** different organizations across **14** states.

- 3 NTTAPs represented
- 10 health centers represented
- 8 PCAs represented
- 3 “other” Ag worker serving agencies



Campaign Focus

1. Understanding and addressing MSAW's unique needs and the barriers they face related to accessing health care
2. Ensuring C/MHC staff receive the training and technical assistance they need to effectively outreach to the Ag Worker population, and accurately classify and report them in UDS
3. Identifying and disseminating promising practices for increasing access to care for MSAWs
4. Supporting local/regional/state coalitions between C/MHCs and other Ag worker-serving entities



Recent Campaign Task Force Activities

- 2021 – First Task Force-sponsored webinar series – Developing Collaborations with State Monitor Advocates
 - Webinar 1: for State Monitor Advocates about Health Centers
 - Webinar 2: for Health Centers about State Monitor Advocates
 - Webinar 3: a joint session about promising practices related to collaboration
- 2022 – Work groups planning next webinar series



Call to Action!

- ✓ Commit to something you will do in your work in order to increase access to care for Ag Worker families in your community.

I commit too...

- ...continuing to prioritize access to professional development and education opportunities for staff serving farmworkers, especially CHWs and Promotoras/es. – Seth
- ...honoring the farmworker voice in the work that we do. – Alexis
- ...continue building relationships/partnerships to close gaps in care for migrant farmworkers. – Pedro

in order to increase Access to care for Ag Workers and their families.

Thank you!

This project was supported by the Health Resources and Services Administration (HRSA) of the U.S. Department of Health and Human Services (HHS) under U30CS0 9737, Technical Assistance to Community and Migrant Health Centers and Homeless, (\$1,583,856). This information or content and conclusions are those of the author and should not be construed as the official position or policy of, nor should any endorsements be inferred by HRSA, HHS, or the U.S. Government.

© National Center for Farmworker Health

