

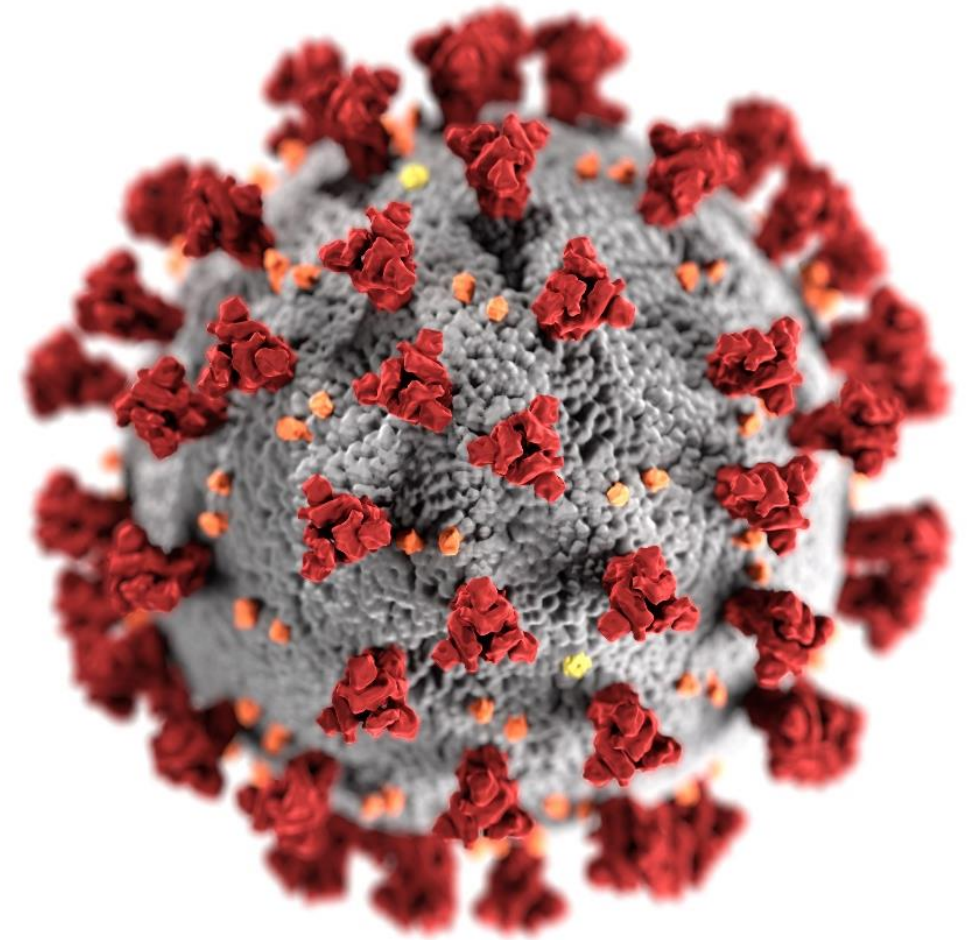
CDC Partnership with National Farmworker Organizations for COVID-19 Outreach and Vaccination

Alfonso Rodriguez Lainz, PhD, DVM, MPVM

Division of Global Migration and Quarantine, US-Mexico Unit

Midwest Stream Forum for Agricultural Worker Health

March 29, 2022



cdc.gov/coronavirus

Migrant farmworkers in the US

- **2.5 million farmworkers***
- “Essential critical infrastructure” workers and at higher risk of COVID-19
 - Overcrowded work, housing, and travel (domestic and international)
 - Immigration status
 - Experience poverty
 - Limited English proficiency
 - Limited access to health care
- **Gaps**
 - Multiple reports of outbreaks and barriers to information, testing, treatment, and vaccination
 - Multiple organizations serving agricultural workers, but uncoordinated strategies and limited capacity



*Martin P. U.S. Farm Employment and Farm Workers.

<https://www.wilsoncenter.org/article/us-farm-employment-and-farm-workers>

How are farmworkers' needs addressed within the CDC COVID-19 response structure?

- **Multiple Task Forces and Teams** with activities related to farmworkers
 - **Farmworkers Interest Group**
 - Share information and coordinate activities
 - Collaborate with other federal agencies
- **Global Migration Task Force** is leading farmworker specific projects

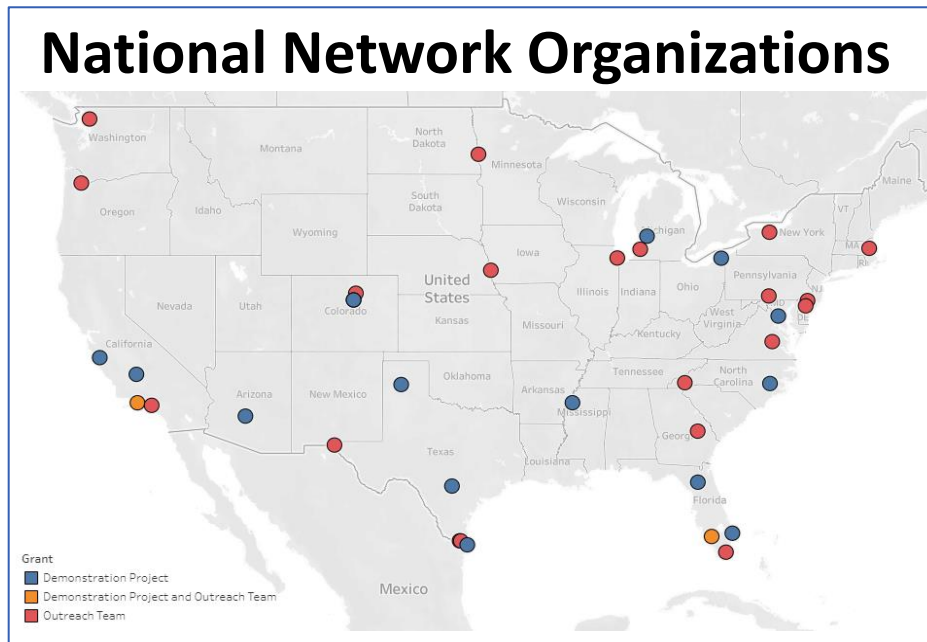


Photo credit: NCFH

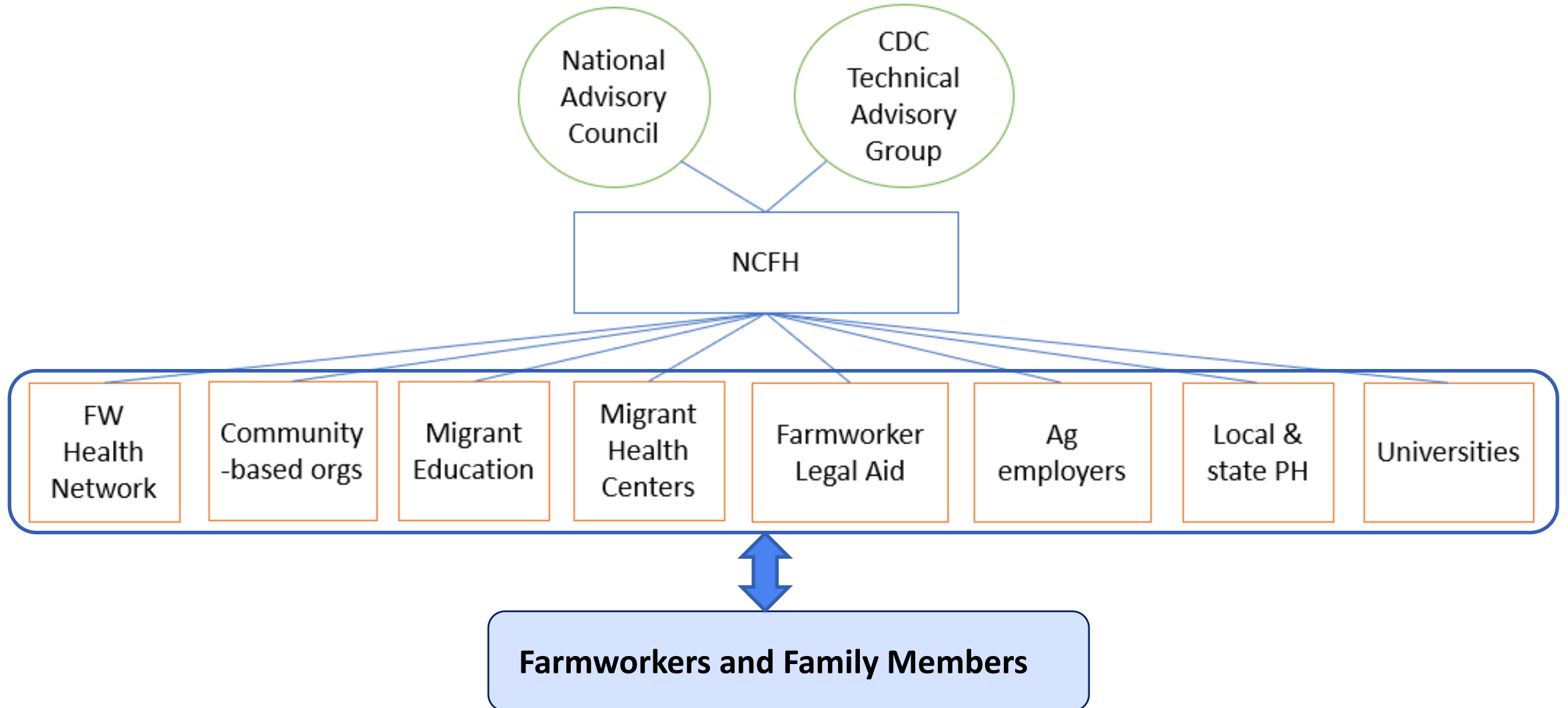


CDC partnership with national network of farmworker-serving organizations

- **5-year Cooperative Agreement**
 - Currently in Year 2
 - Funding secured for Year 3
- **Led by National Center for Farmworker Health**
 - http://www.ncfh.org/infectious_diseases.html
- **Objectives:**
 - Strengthen organizations' coordination and outreach capacity to address **public health emergencies and emerging infectious disease issues**
 - Enhance education, access, and adoption of COVID-19 preventive measures among farmworkers and employers



CDC/NCFH national partnership network structure



Partnership COVID-19 outreach & education strategies

- **Develop and adapt education materials** in multiple languages and formats
- **Direct funding, trainings, and technical assistance** to 43 local organizations to conduct outreach and facilitate access to vaccination and testing
- **Assist ag employers in testing, vaccinating workers**
- **National radio and social media campaign** in Spanish and indigenous languages
- **Conduct farmworker community assessment surveys**



(New) Partnership has proven to be highly impactful (Year 1 project outcomes)

Activity	# of farmworkers and family members
Education (digital or face-to-face outreach)	875,000
COVID-19 testing referrals	27,000
Health and social services referrals	78,000
PPE items distributed (e.g., masks, hand sanitizers)	400,00
Received at least 1 dose of COVID-19 vaccine	63,000

PPE = personal protective equipment

A photograph of farmworkers in a field, likely harvesting strawberries. The workers are wearing protective gear, including face shields and gloves, and are carrying blue plastic baskets. The scene is set in a lush green field with rows of plants.

FARMWORKER COVID-19 COMMUNITY ASSESSMENTS

Photo credits: all provided by NCFH



Counties included in 5 completed Community Assessments (August-December, 2021)



Mixed-methods based on CDC's Rapid Community Assessment Guide

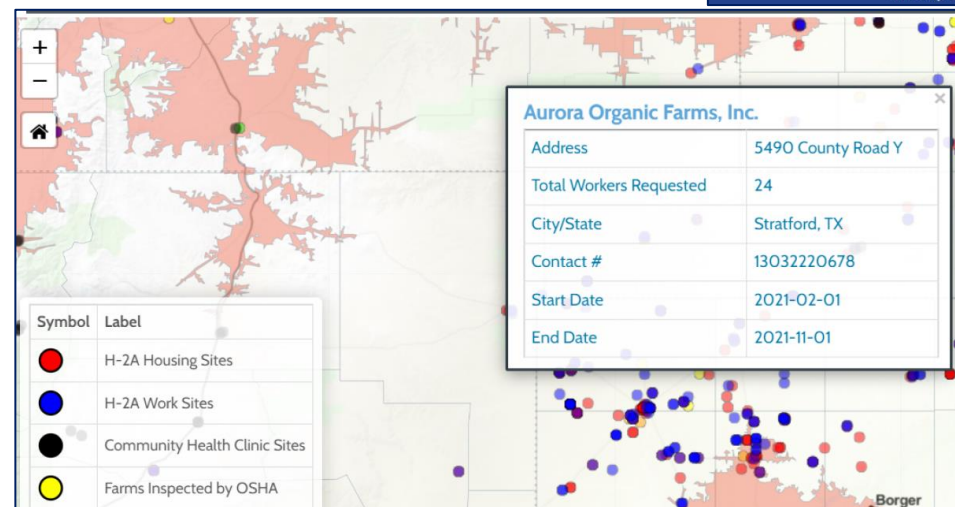
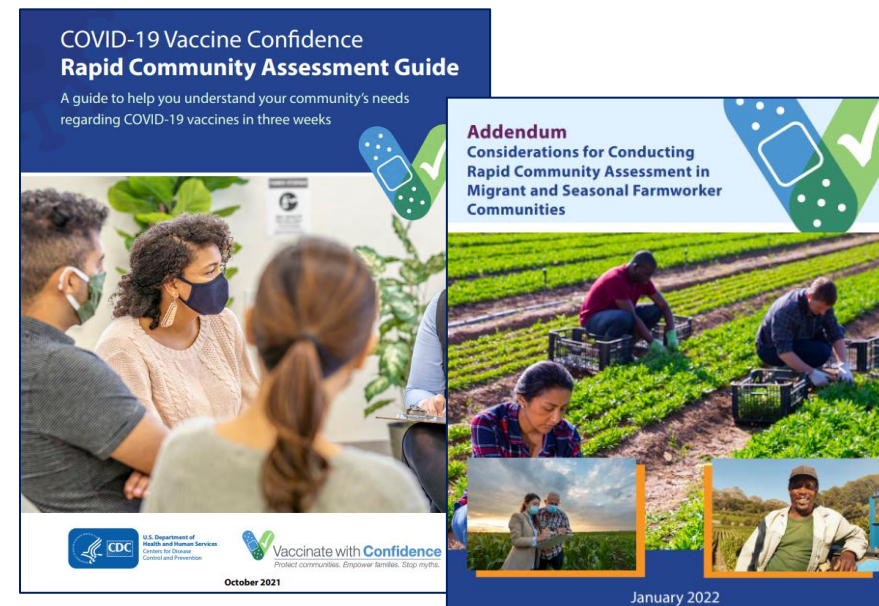
1. Analysis of existing data

- Assess local farmworker population size, characteristics, farm and housing locations
- NCFH Ag Dashboard

2. Key informant interviews

3. Sampling survey

- By phone or in-person at key locations (e.g., farms, housing, community sites)

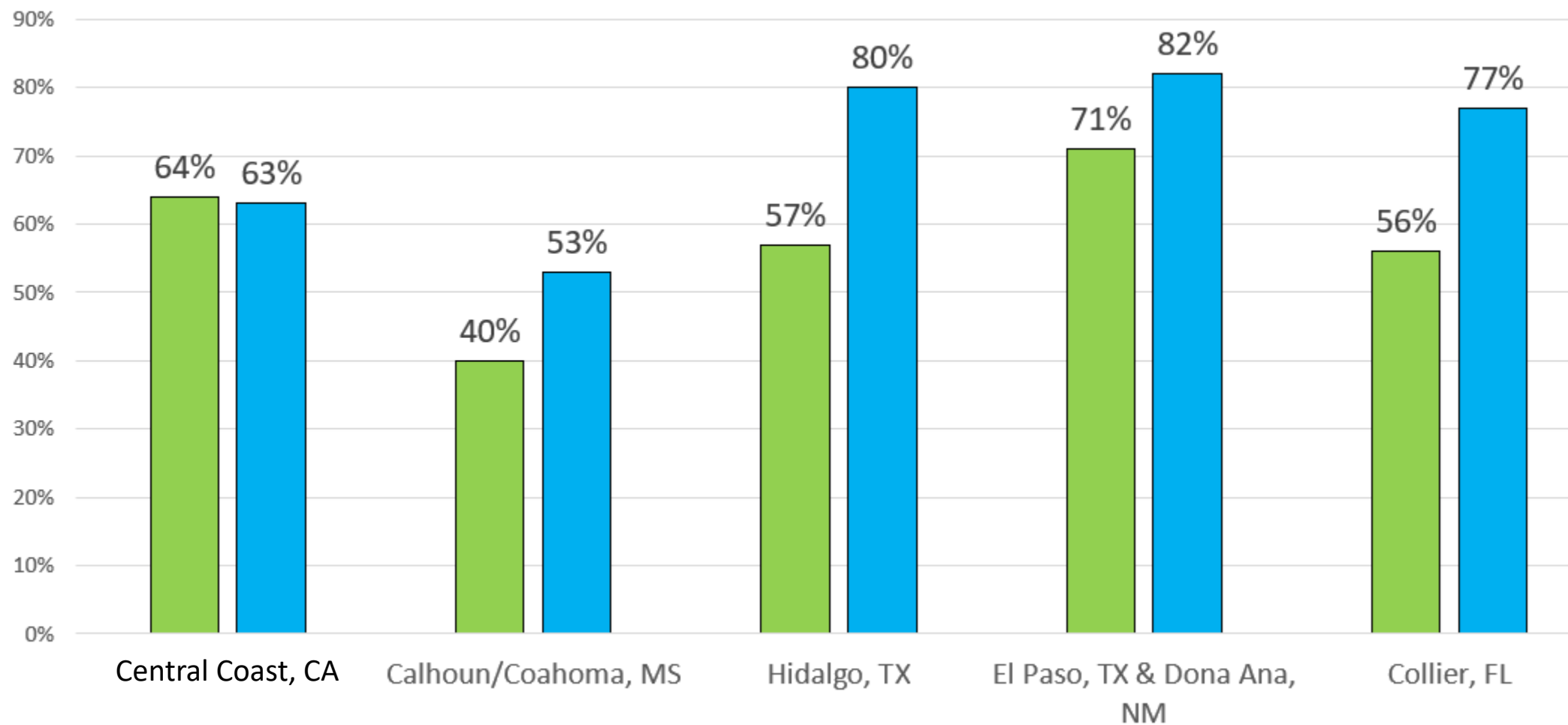


■ Selected survey results

(Full reports: [FCCA - NATIONAL CENTER FOR FARMWORKER HEALTH \(ncfh.org\)](https://www.ncfh.org/))



Percent of respondents fully vaccinated* compared to county population



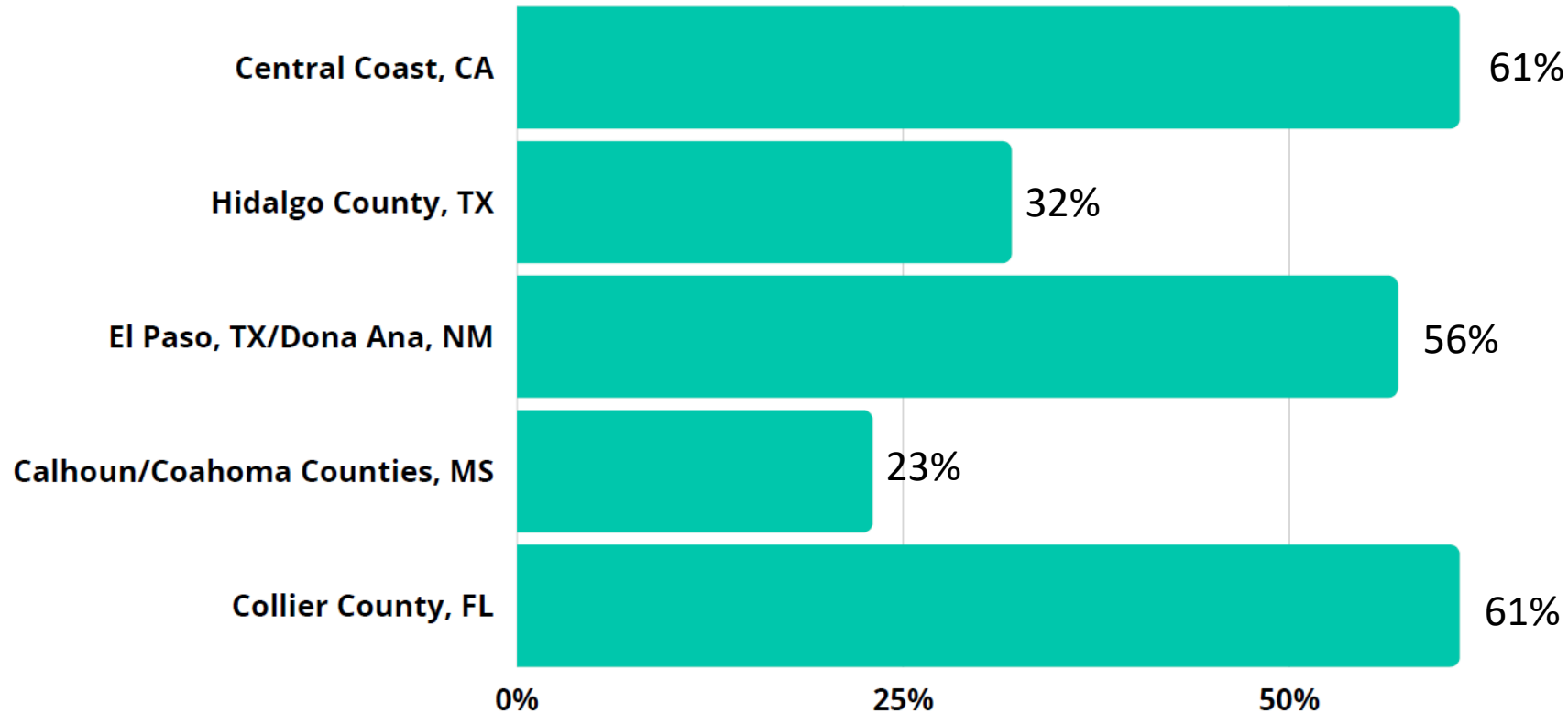
*Completed a primary series of a FDA or WHO accepted COVID-19 vaccine

■ Farmworkers ■ County Population

Differences in full COVID-19 vaccination by socio-demographics

- **Groups with lower vaccination coverage:**
 - **Younger** age group (18-25 yrs old)
 - **Indigenous persons**, compared to other racial/ethnic groups
- No clear pattern by **nativity or immigration status** among communities

Percent ever tested for COVID-19 by community



Percent that have been tested for COVID-19 at some point in pandemic



Upcoming Community Assessments



Other CDC farmworker-focused initiatives



1. CDC COVID-19 guidance for agricultural workers, employers, and partners

■ Published multiple guidance documents and tools:

- [CDC COVID-19 Interim Guidance for Agriculture Workers and Employers](#)
- [Essential Workers COVID-19 Vaccine Toolkit](#)
- [CDC Interim Guidance for Businesses and Employers to Plan and Respond to Coronavirus Disease 2019 \(COVID-19\)](#)

■ Webpage and toolkit for H-2A workers and employers


- [People with a Temporary Agricultural Work Visa \(H-2A Visa\)](#)
- [Toolkit for H-2A Employers, Partner Agencies, and Partner Organizations](#)

Agricultural Employer Checklist for Creating a COVID-19 Assessment and Control Plan

To prevent and slow the spread of COVID-19, agricultural employers can use this checklist to create a COVID-19 assessment and control plan for applying specific preparation, prevention, and management measures. This checklist has been developed based on the [Agriculture Workers and Employers Interim Guidance from CDC and the U.S. Department of Labor](#).

Agricultural Employer Checklist Section 1: Assessment

Item	Status	Notes/Comments
Consider the characteristics of your region, worksite, space, and job tasks that may impact your assessment and control of COVID-19.	<input type="radio"/> Completed <input type="radio"/> Not Started <input type="radio"/> Ongoing <input type="radio"/> N/A	
Monitor federal, state, and local public health communications about COVID-19.	<input type="radio"/> Completed <input type="radio"/> Not Started <input type="radio"/> Ongoing <input type="radio"/> N/A	
Ensure workers have access to current information.	<input type="radio"/> Completed <input type="radio"/> Not Started <input type="radio"/> Ongoing <input type="radio"/> N/A	
Check local public health information and the CDC COVID-19 website daily, or as needed depending on local conditions.	<input type="radio"/> Completed <input type="radio"/> Not Started <input type="radio"/> Ongoing <input type="radio"/> N/A	

 U.S. Department of Health and Human Services
Centers for Disease Control and Prevention

Source: <https://www.cdc.gov/coronavirus/2019-ncov/community/guidance-agricultural-workers.html>

2. Technical support to health departments

- CDC experts' participation in **webinars and technical assistance calls with partner organizations**
- **CDC teams deployed** to assist with surveillance data analysis, community assessments, and outbreak investigations
 - Chelan-Douglas Health District, Washington State
 - Imperial County, California
 - Yuma County, Arizona
 - Morrow and Umatilla Counties, Oregon
- Current collaboration with the California Department of Public Health



3. Assess mobility patterns of farmworkers

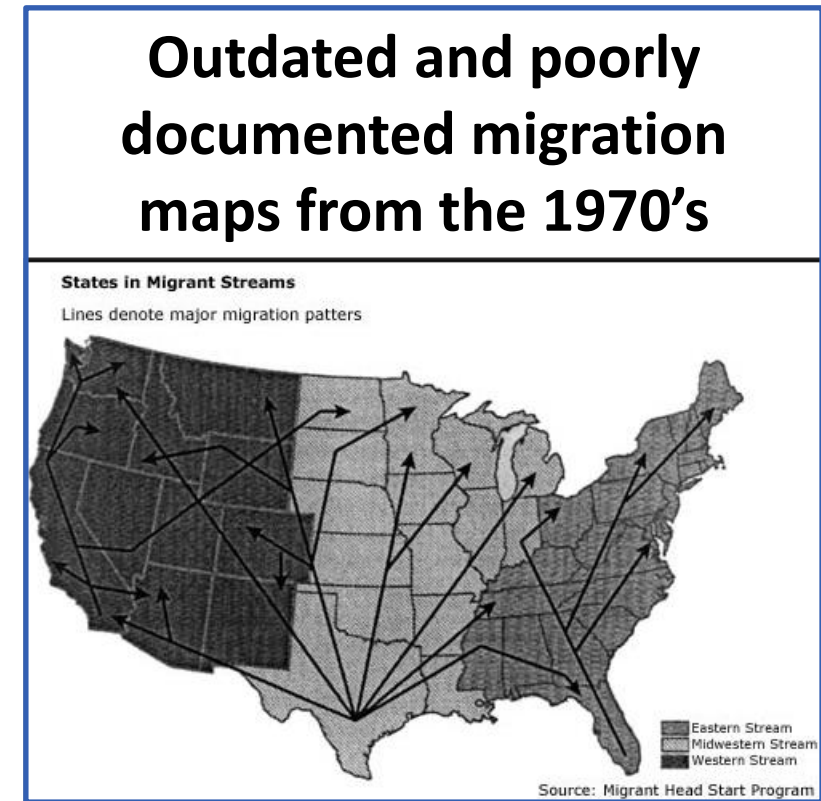
- **Project objective:**

- Document best current evidence on farmworkers' mobility patterns (e.g., origin, destination, travel routes)

- **Methodology**

- Conducted by U.S. and Mexico expert teams
- Analysis of existing data sources
- Key informant interviews
- Participatory mapping

Upcoming publications



4. COVID-19 program for H-2A workers

- **Pilot free, voluntary COVID-19 testing** before arriving to the United States
 - Collaboration with **National Council of Agricultural Employers (NCAE)** and U.S. Consulates in Mexico
 - Implemented through panel physicians in Mexico
 - Provided health education and information about access to health care in the United States
 - If + test, followed isolation recommendations (employers assisted with housing needs)
- **COVID-19 vaccination at the US-Mexico border (Summer 2021)**
 - Collaboration with **NCAE** and San Diego County health department



Closing Remarks

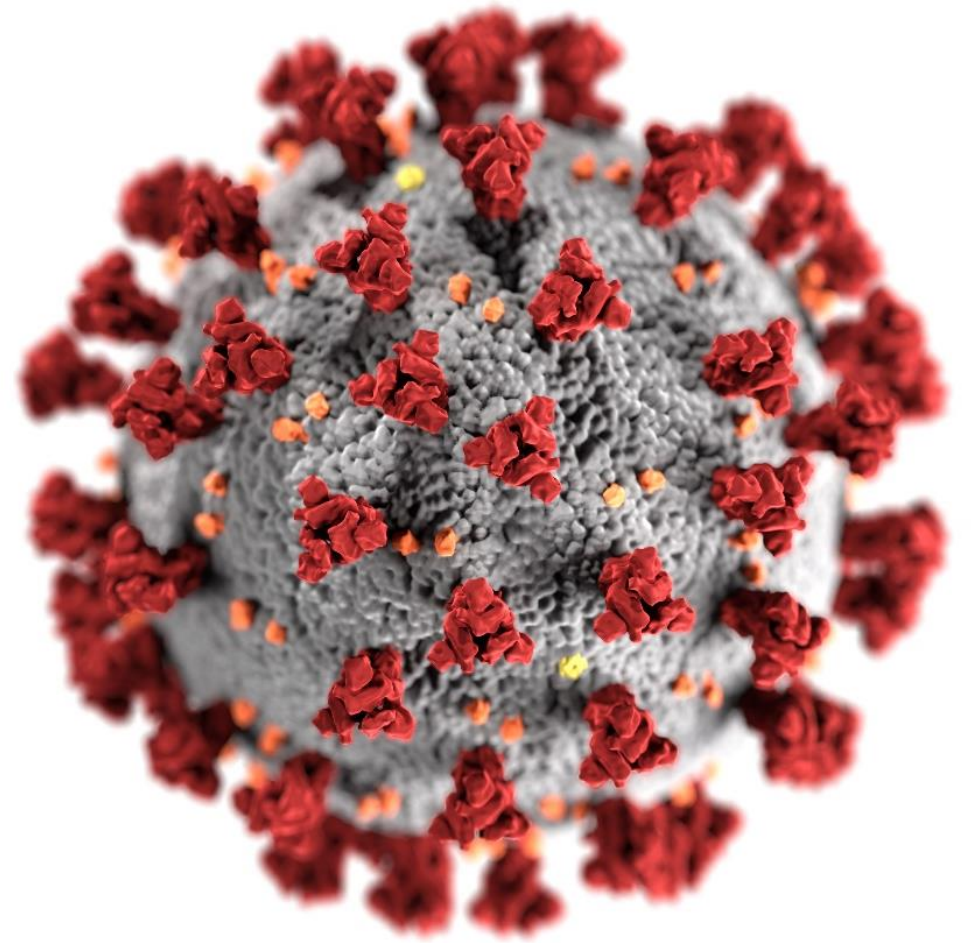
- **Farmworkers are a priority population** for public health emergency preparedness and response
- Partnership between the CDC and a national network of farmworker-serving organizations and employers is critical to protect the agricultural workforce and industry, including:
 - Sustained support (funding and technical assistance)
 - Ongoing monitoring of agricultural workers' disease burden and access to prevention measures
 - Enhanced coordination among federal and state agencies
 - Expand to non-emergency health issues



Acknowledgements

- NCFH leads (Sylvia Partida and Bethany Alcauter) and staff
- Staff from network partner organizations
- Farmworkers and their family members





For more information, contact CDC
1-800-CDC-INFO (232-4636)
TTY: 1-888-232-6348 www.cdc.gov

Alfonso Rodriguez Lainz (jqj3@cdc.gov)

The findings and conclusions in this report are those of the authors and do not necessarily represent the official position of the Centers for Disease Control and Prevention.

