



Migrant Program Overview, Pandemic Outreach Innovations and Importance of Creating Informational Material

Jo Estrada-Guerra
Departmental Analyst
State of Michigan

Department of Health and Human Services
Farmworker Outreach Services Division

Putting people first, with the goal of helping all Michiganders lead healthier and more productive lives, no matter their stage in life.

Objectives

- Overview of farmworker contributions in Michigan and the Michigan Department of Health and Human Services Migrant Program.
- Outreach innovation brought on by the pandemic.
- Importance of creating crucial communications for agricultural workers.

Farmworker Contributions in Michigan



- Migrant and seasonal farmworkers are key in the production of Michigan crops each year.
- MI leads the nation in asparagus, black and cranberry beans, cucumbers, tart cherries, Niagra grapes and squash.
- Michigan Agriculture contributes \$104.7 billion annually to Michigan's economy.
- There are approximately 96,000 migrant and seasonal farmworkers (and their families) in Michigan.

Source: Michigan Department of Agriculture and Rural Development. Michigan Agriculture Facts & Figures.; 2019.& Larson AC. Michigan Migrant and Seasonal Farmworker Enumeration Profiles Study.; 2013. Accessed November 12, 2022. https://www.michigan.gov/mdhhs/-/media/Project/Websites/mdhhs/Doing-Business-with-MDHHS/Migrant-Affairs/2013_MSFW_Profiles_Study_496526_7.pdf?rev=d47139297bb9479eb07405251f322a34

Meet the team

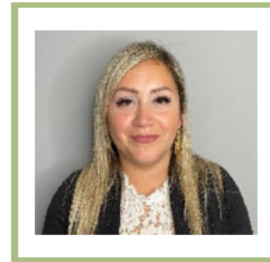
FARMWORKER OUTREACH SERVICES DIVISION



DALE FREEMAN
Director



AUDRA FUENTES
Departmental Analyst



JO ESTRADA-GUERRA
Departmental Analyst



LINDA AGUILAR
Office Assistant



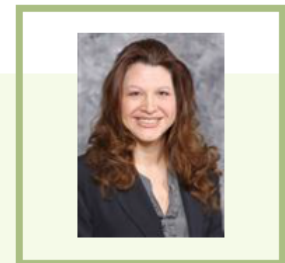
GEORGE RAMIREZ-MADRIGAL
Student Assistant



JACKIE CORTES
Student Assistant



MIGRANT SUPERVISORS & SPECIALISTS
11 Local County Migrant Programs



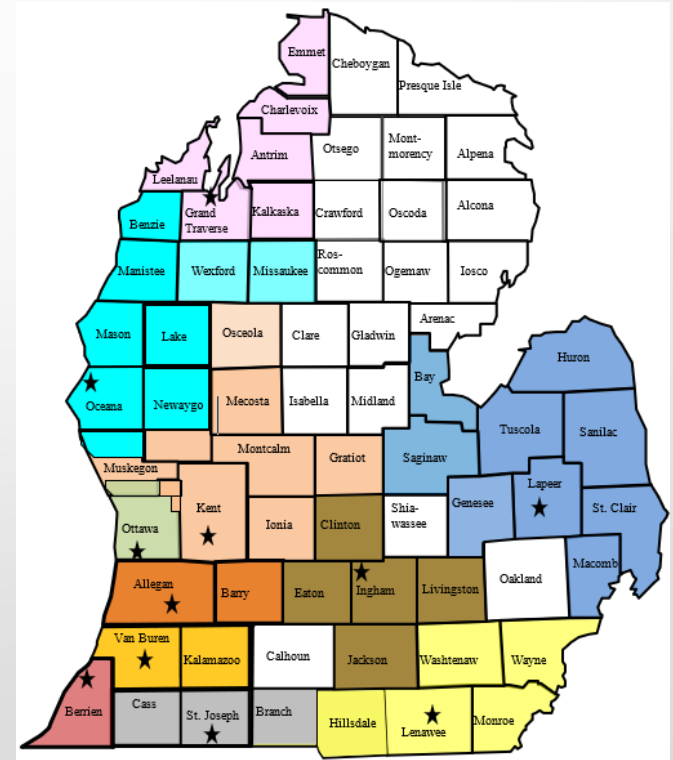
STACEY TADGERSON
Departmental Specialist

MICHIGAN DEPARTMENT OF HEALTH AND HUMAN SERVICES (MDHHS)

Migrant Program Staff

38 DHHS Migrant Program staff housed in 11 counties and providing outreach & services to MSFWs in 48 counties

- Allegan DHHS, Allegan
- Berrien DHHS, Benton Harbor
- Grand Traverse DHHS, Traverse City
- Ingham DHHS, Lansing
- Kent DHHS, Grand Rapids
- Lapeer DHHS, Lapeer
- Lenawee DHHS, Adrian
- Oceana DHHS, Hart
- Ottawa DHHS, Holland
- St. Joseph DHHS, Centreville
- Van Buren DHHS, Hartford



Our amazing Migrant Program Staff



MDHHS Assistance Programs

- Assistance Programs & Standard Processing Times
 - **Food Assistance**
 - Expedited 7 days, Standard 30 days
 - **Medical Assistance (Medicaid, Healthy Michigan Plan, Emergency Services Only)**
 - Standard 45 days, Disability 60, Pregnant Women 15 days
 - **Child Development and Care Assistance**
 - Expedited 7 days, Standard 30 days, no registered provider required for processing
 - **Cash Assistance**
 - 30 days, Migrant Families do not meet Residency to Qualify
 - **State Emergency Relief**
 - 10 days

Ways our customers can apply

Michigan Migrant and Seasonal Farmworkers are encouraged to get assistance from a DHHS Migrant Program Specialist (MPS) when applying.



Other ways to apply for DHHS services:

- Online via MIBridges www.Michigan.gov/MIBridges
- In-person at a Local DHHS Office
- Paper Applications
- Home Calls
- Over the Phone:
 - Medicaid 855-789-5610, Other Programs 800-552-4483

Outreach



Uniqueness of Farmworkers

Family-Oriented

Language

Work Schedule

Beliefs

Any others?

Why is outreach important?

- Outreach is the single most important way to connect with farmworkers.
- Quality outreach equals successful outcomes for farmworkers and their families.
- Having outreach specialists that are bilingual and having outreach material available in Spanish is key to quality outreach.





COVID-19

- Unprecedented time for all.
- Many unknowns, challenges and risks.
- Farmworkers continued to work and needed services including information regarding COVID-19.

Despite COVID-19, Migrant Program Specialists continued to outreach, doing the following activities:

- Transportation and Interpretation
- Migrant Resource Councils
- Camp/Home Visits
- Grower Visits
- Service Provider Networking
- And more



Innovation Brought on by the Pandemic

- Developed new outreach techniques and partnerships.
- Medicaid extension and a heightened emphasis on health, including mental health.
- Creation of informational material and resources to help keep farmworkers informed.

Outreach Innovation



**VIRTUAL
OUTREACH**



PARTNERSHIPS



**SUPPORTING
FARMWORKERS
WHILE ADHERING
TO SAFETY
GUIDELINES**



Virtual Outreach

Texting

Facetime

Emails

Partnerships

Working with Families



**Multi-agency
Working**

Nathan Loynes

Imagine having a toolbox with just one tool and you have this complex repair you must do. How much could you do with that one tool?



Now, imagine having a toolbox with all different kinds of tools. How much more can you achieve with the variety of tools?



Benefits of partnerships when outreaching

- You are providing a more complete visit to the farmworker.
- You are being respectful of their time by minimizing multiple visits.
- You are making better use of resources available.
- You become more familiar with other agencies and what services they offer.
- Better outcomes as a whole.

Tips for Partnering with other agencies:

- Do your research!
- Organize/participate in monthly meetings.
- Exchange contact information at the beginning of the season.
- Create outreach collaboration teams.
- Invite partner agencies to outreach.
- Accept outreach invites!
- Have follow-up meetings to see how outreach experiences went.



Pandemic Partnerships



- Councils were meeting virtually.
- Partners were communicating with each other more and pooling resources.
- Brainstorming sessions took place thru workgroups and more.
- Partnerships were formed with Health Departments, FQHCs and other health entities.

The pandemic helped people come together and proved how resilient we are!

Supporting Farmworkers

- Face Masks
- Free Test Kits
- Sanitizing Kits
- Transportation to vaccination events or appointments
- Delivering food boxes to farmworkers





**In what ways did you
modify your outreach
strategies?**

Outreach is important and outreach workers need to be able to adjust and develop new techniques when faced with challenges.



Are there any questions?



Increased Emphasis on Health



**MEDICAID
EXPANSION**



**HEALTH
SUBCOMMITTEE**



**MENTAL HEALTH
SERVICES**

Medicaid Expansion



- Emergency Services Only Medicaid Coverage through May 2023 for COVID-19 healthcare includes:
 - In-patient and Out-patient
 - Tests, vaccinations, and prescriptions
- Emergency Services Only Medicaid Coverage for Kidney Dialysis
 - Outpatient Dialysis coverage for individuals with End Stage Renal Disease effective 4/1/22
- Medicaid Coverage for Pregnant Women Expanded from 2 to 12 months Postpartum

Health Subcommittee

- Interagency Migrant Resource Council Subcommittee
- Formed in 2022
- Health goals





Mental Health Services

- The pandemic highlighted the need for mental health services among farmworkers.
- Farmworkers can experience feelings of loneliness and isolation while in Michigan and away from their families. Their mental health is important for a safe and healthy workforce.
- The following are resources that can assist farmworkers with mental health needs in MI:
 - Migrant Health Centers
 - Community Mental Health
 - Local Health Departments
 - In MI, calling the Farmworker Hotline for referrals 1-833-SIAYUDA
 - Mi's Stay Well Program
 - Calling 988, the National Suicide Prevention Line

Are there any questions?



Creation of Informational Material



**COVID-19
FARMWORKER
HOTLINE**



**STAY HEALTHY,
STAY SAFE
BROCHURE**



MPOX

COVID-19 Farmworker Hotline

Extension of original department hotline.

- Vaccine information hotline specifically for farmworkers.
- The hotline is used to answer questions about vaccines, connect farmworkers to resources and where to get vaccinated.
- Toll free:

1-833-SIAYUDA or 1-833-742-9832.



**Línea directa
COVID-19
para
Campesinos**
(COVID-19 FARMWORKER HOTLINE)

1-833-SIAYUDA or 1-833-742-9832

MDHHS
Michigan Department of Health & Human Services

COVID-19 Brochure for Farmworkers

**Stay Healthy,
Stay Safe**

Farmworkers Guide to
Navigating COVID-19



- Origins of the brochure
- Innovation
- Availability
- Practicality

Components of Brochure

- Overview
- Covid-19 Isolation Guidelines
- Testing Resources
- Masking recommendation and resources
- Vaccines
- Boosters
- Treatment Options
- Vaccinating Children
- Mental Health Resources
- Transportation Assistance
- Contact information

MPOX

CURRENT STATUS

DAILY CASES

DEMOGRAPHICS

VACCINATION MAP

DAILY VACCINATIONS

VACCINATION
DEMOGRAPHICS

LEARN MORE

View Cases

View Table

Select Preparedness Region:

All

Select County:

All

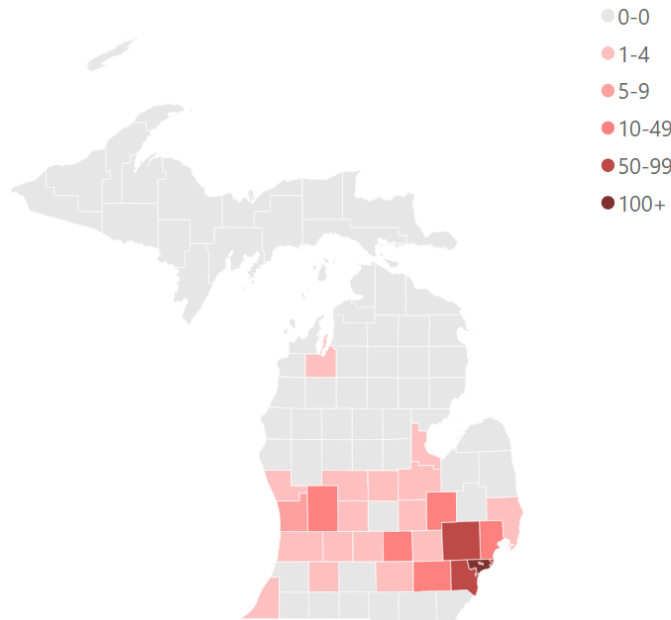
This report is provisional and subject to change. City of Detroit and Wayne County are reported separately. FCI indicates federal correctional institute. MDOC indicates Michigan Department of Corrections.

Source: Michigan Disease Surveillance System (MDSS) and Vital Records.

MPOX Cases by County

MPOX is a potentially serious viral illness that can be transmitted from person to person through direct contact with body fluids or MPOX lesions. MPOX associated with this outbreak were first identified in Michigan in June 2022.

Cases by County



Michigan

Tuesday, March 28, 2023

Current Totals

Total Cases	Total Deaths
399	0

This page shows updated data for laboratory-confirmed and probable cases among Michigan residents, as well as vaccinations administered. Cases of MPOX are reported to Michigan DDHS from laboratories and healthcare providers.

The cumulative case counts, deaths, and cases by jurisdiction will be updated every other week on Tuesdays with data as of the day prior.

Current Status

- MPOX is the disease caused by infection with the monkey pox virus.
- Michigan saw their first identified cases in June of 2022.
- mpox was affecting black and brown communities more than others, mostly affecting men having sex with men (MSM).
- mpox was NOT exclusive to MSM.
- mpox is contagious and can be transmitted when living in close contact with a person who is infected.

Because of the nature of the virus and the way it was spreading, farmworkers living in shared housing were potentially at risk of contracting/spreading the virus if a member of the household became infected.

Understanding how mpox is contracted and being proactive, the Farmworker Outreach Services Division created a **MPV informational flyer**.

Vamos a Hablar Sobre La Viruela del Mono

La Viruela del Mono, o "Monkeypox Virus (MPV)" en inglés, es una enfermedad que causa ronchas y puede ser severo. MPV se puede transmitir por medio de contacto cercano con alguien infectado o con objetos como toallas, ropa, cobijas, etc., de una persona infectada. Trabajadores agrícolas que viven juntos deben ser conscientes de los síntomas de MPV. Es muy importante monitorear los cambios en su cuerpo que puede indicar que se ha desarrollado una infección. Consulte con un profesional médico inmediatamente si empieza a sentir síntomas. Autoaislar es importante si presente síntomas o si dio positivo al virus.

Algunas personas que han sido expuestas al MPV pueden ser elegibles para una vacuna que protege contra el virus. Llame a un profesional médico para más información.

Monkeypox



Escanee este código QR para información del MDHHS acerca de los síntomas, prevención y tratamiento para MPV.



Michigan.gov/MPV

Señas y Síntomas de la Viruela del Mono

- Roncha o llagas, a veces en el área o cerca del área de los genitales o ano y también en otras áreas como las manos, pies, pecho o cara. La roncha pasará por varias etapas. Pueden empezar como "granos", luego ampollas llenas de líquido y luego se hacen costra que eventualmente se caerá.
- Granos/ampollas ubicadas dentro del cuerpo, incluyendo la boca, vagina o ano.
- Fiebre.
- Dolor de cabeza.
- Dolores musculares o dolor de la espalda.
- Inflamación de los ganglios linfáticos.
- Escalofríos.
- Cansancio.

Algunas personas presenten ronchas o llagas primero y luego otros síntomas. Algunas personas solamente presentan ronchas o llagas. MPV es contagioso desde el comienzo del primer síntoma hasta que todas las llagas se hayan curado completamente y una capa fresca de piel se haya formado sobre ellas.

Si empieza tener síntomas, debería hablar con un proveedor de atención médica inmediatamente. Si no tiene un proveedor médico, comuníquese con su departamento de salud local. Para encontrar su departamento de salud local, escanee el código QR.



Are there any questions?



Closing



“We cannot seek achievement for ourselves and forget about progress and prosperity for our community... Our ambitions must be broad enough to include the aspirations and needs of others, for their sakes and for our own.”

- CESAR CHAVEZ

LOVE EXPANDS

THANK YOU



Farmworker Outreach Services Division

Jo Estrada-Guerra
Department Analyst,
Farmworker Outreach Services Division
Economic Stability Administration
Michigan Department of Health and Human
Services

estradaguerraj@michigan.gov

Phone (231) 721-5988

Fax (517) 241-7826

*Putting people first, with the goal of helping all Michiganders lead healthier
and more productive lives, no matter their stage in life.*